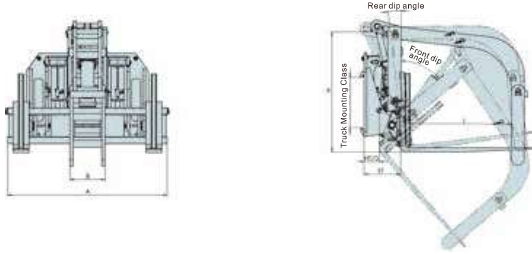


Hinged Steel pipe Clamp



Capacity@ Load Center (Kg@mm)	Catalog Order No.	Truck Mounting Class	Hinged Fork Mounting Class	Carriage Width A (mm)	Roller Width RW (mm)	Roller Pivot Height RH (mm)	Minimum Clip L (mm)	Effective Thickness ET (mm)	Horizontal Center of Gravity HCG (mm)	Tilt Forward Tilt Backward	Weight (kg)	Available Forklift (t)
3000@500	QY30G-B1	III	Non-standard fork	1500	345	1100	970	345	350	50°/10°	870	3-4.5t
5000@600	QY50G-C4	IV	Non-standard fork	1785	275	1170	970	385	350	45°/10°	960	5-7t
2500@600	QY25G-B6	III	Non-standard fork	1380	345	1100	970	335	430	50°/10°	700	3-4.5t
2500@500	QY25G-B7	III	Standard fork	1380	310	1090	980	380	430	50°/10°	545	3-4.5t
5000@500	QY50G-C6	IV	Non-standard fork	1785	390	871	819	470	450	50°/10°	1040	5-7t

Capacity@ Load Center (lbs@in)	Catalog Order No.	Truck Mounting Class	Hinged Fork Mounting Class	Carriage Width A	Roller Width RW	Roller Pivot Height RH	Minimum Clip L	Effective Thickness ET	Horizontal Center of Gravity HCG	Tilt Forward Tilt Backward	Weight (lbs)	Available Forklift (t)
6600@20"	QY30G-B1	III	Non-standard fork	59.1"	13.6"	43.3"	38.2"	13.6"	13.8"	50°/10°	1918	3-4.5t
11000@23.6"	QY50G-C4	IV	Non-standard fork	70.3"	10.8"	46.1"	38.2"	15.2"	13.8"	45°/10°	2116	5-7t
5500@23.6"	QY25G-B6	III	Non-standard fork	54.3"	13.6"	43.3"	38.2"	13.2"	16.9"	50°/10°	1543	3-4.5t
5500@20"	QY25G-B7	III	Standard fork	54.3"	12.2"	42.9"	38.6"	15"	16.9"	50°/10°	1202	3-4.5t
5000@500	QY50G-C6	IV	Non-standard fork	70.3"	15.4"	34.3"	32.3"	18.5"	17.7"	50°/10°	2292	5-7t

- Notes: 1. Please gain the actual overall carrying capacity of forklift trucks/attachments from the forklift truck manufacturers.
2. Forklift truck needs to add two groups of additional oil lines to match the attachments, and all the oil cylinders have self-locking functions.

Model	Pressure Value Bar		Flow Value L/min	
	Min.	Max.	Min.	Recommand Max.
QY**G	35	160	19	38 57

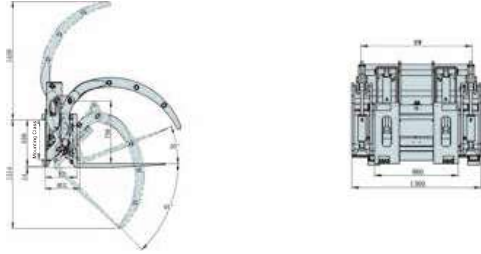
Configuration of Key Parts of Truck Attachments

- Hydraulic system: the oil cylinders adopt originally imported hydraulic control check valves; all the seals adopt imported products; and the high-pressure rubber hoses adopt cone sealed high-performance imported rubber hoses.
- Structural part: the fork carriages are welded by high-performance alloy steel plates.
- Mechanical performance: it can realize 45° forward tilting and 19° backward tilting; and it adds hydraulic control check valves for the oil cylinders to realize holding pressure for a long time, and further ensure the safety at work or rubber hoses burst.
- Applicable scope: it's applied to the transportation/tipping by clamping various round pieces of wood and round clothes, etc., which reduces the logistics costs and increases the production efficiency significantly.



The hinged broke handler is able to enlarge the upward and downward tilt angle of fork carriage (Upward 20°-25° , down 45°), and the arms will hold the goods to avoid damages in transit. Moreover, the hinged broke handler used with containers, such as bucket, will dump the bulk cargo from the bucket efficiently and safely. It is widely used in recycling, and waste management, greatly improve the flexubility of loading and unloading of the forklift.

Hinged Broke Handler



Capacity@ Load Center	Catalog Order No.	Mounting Class	Available Fork Length	Tilt Angle/Ons (Up/Down)	Roller width	Roller Pivot Height	Effective Thickness	Vertical Center of Gravity	Horizontal Center of Gravity	Weight	Available Forklift
(Kg@mm)			(mm)	(mm)	(mm)	(mm)	(mm)	VCG (mm)	HCG (mm)	(kg)	(t)
2000@500	FC20Q-B2	III	1070	20° /45°	1170	760	375	365	395	580	3-4.5t
2000@500	FC20Q-B2-01	III	1220	10° /45°	1170	805	375	365	405	590	3-4.5t
2000@500	FC20Q-B3	III	1370	10° /45°	1170	809	335	365	510	610	3-4.5t

Capacity@ Load Center	Catalog Order No.	Mounting Class	Available Fork Length	Tilt Angle/Ons (Up/Down)	Roller width	Roller Pivot Height	Effective Thickness	Vertical Center of Gravity	Horizontal Center of Gravity	Weight	Available Forklift
(lbs@in)								VCG (mm)	HCG (mm)	(lbs)	(t)
4400@20"	FC20Q-B2	III	42.1"	20° /45°	46.1"	29.9"	14.8"	14.4"	15.6"	1279	3-4.5t
4400@20"	FC20Q-B2-01	III	48"	10° /45°	46.1"	31.7"	14.8"	14.4"	15.9"	1301	3-4.5t
4400@20"	FC20Q-B3	III	53.9"	10° /45°	46.1"	31.9"	13.2"	14.4"	20.1"	1345	3-4.5t

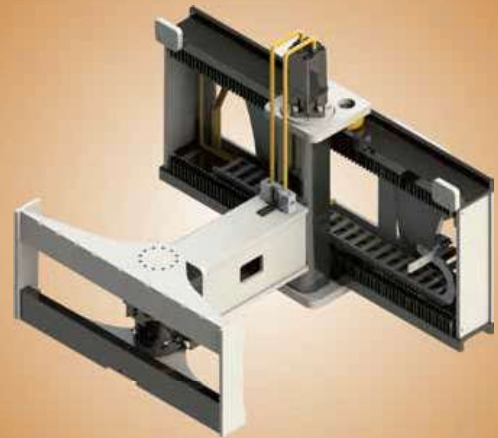
- Notes: 1. Please gain the actual overall carrying capacity of forklift trucks/attachments from the forklift truck manufacturers.
2. Forklift truck needs to add two groups of additional oil lines to match the attachments, and all the oil cylinders have self-locking functions.

Model	Pressure Value Bar		Flow Value L/min	
	Min.	Max.	Min.	Recommend Max.
FC**Q	35	160	19	38 57

Configuration of Key Parts of Truck Attachments

- Hydraulic system: the oil cylinders adopt originally imported hydraulic control check valves; all the seals adopt imported products; and the high-pressure rubber hoses adopt cone sealed high-performance imported rubber hoses.
- Structural part: all the structural parts are welded by high-performance alloy steel plates.
- Mechanical performance: it can realize 45° forward tilting and 10° backward tilting; and it adds hydraulic control check valves for the oil cylinders to realize holding pressure for a long time, and further ensure the safety at work or rubber hoses burst.
- Applicable scope: it's applied to the transportation/tipping by clamping waste paper and other soft-material cargoes, which reduces the logistics costs and increases the production efficiency significantly.

HELI AST-Warehousing Equipments



AST-Warehousing Equipments is an unique attachment that can put the forks on either front, left or right side while loading. It is between the forks and fork carriage, swing 180° and side shifting via 2 units of hydraulic circuit. It can reach the goods from the side without turning around, realizing reload and stack goods in the narrow aisle.