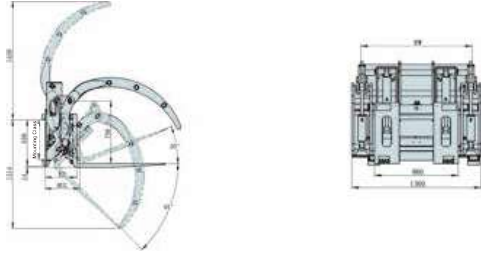


Hinged Broke Handler



| Capacity@ Load Center | Catalog Order No. | Mounting Class | Available Fork Length | Tilt Angle/Ons (Up/Down) | Roller width | Roller Pivot Height | Effective Thickness | Vertical Center of Gravity | Horizontal Center of Gravity | Weight | Available Forklift |
|--------------------------|----------------------|-------------------|--------------------------|--------------------------------|-----------------|---------------------------|------------------------|----------------------------------|------------------------------------|--------|-----------------------|
| (Kg@mm) | | | (mm) | (mm) | (mm) | (mm) | (mm) | VCG (mm) | HCG (mm) | (kg) | (t) |
| 2000@500 | FC20Q-B2 | III | 1070 | 20° /45° | 1170 | 760 | 375 | 365 | 395 | 580 | 3-4.5t |
| 2000@500 | FC20Q-B2-01 | III | 1220 | 10° /45° | 1170 | 805 | 375 | 365 | 405 | 590 | 3-4.5t |
| 2000@500 | FC20Q-B3 | III | 1370 | 10° /45° | 1170 | 809 | 335 | 365 | 510 | 610 | 3-4.5t |

| Capacity@ Load Center | Catalog Order No. | Mounting Class | Available Fork Length | Tilt Angle/Ons (Up/Down) | Roller width | Roller Pivot Height | Effective Thickness | Vertical Center of Gravity | Horizontal Center of Gravity | Weight | Available Forklift |
|--------------------------|----------------------|-------------------|--------------------------|--------------------------------|-----------------|---------------------------|------------------------|----------------------------------|------------------------------------|--------|-----------------------|
| (lbs@in) | | | | | | | | VCG (mm) | HCG (mm) | (lbs) | (t) |
| 4400@20" | FC20Q-B2 | III | 42.1" | 20° /45° | 46.1" | 29.9" | 14.8" | 14.4" | 15.6" | 1279 | 3-4.5t |
| 4400@20" | FC20Q-B2-01 | III | 48" | 10° /45° | 46.1" | 31.7" | 14.8" | 14.4" | 15.9" | 1301 | 3-4.5t |
| 4400@20" | FC20Q-B3 | III | 53.9" | 10° /45° | 46.1" | 31.9" | 13.2" | 14.4" | 20.1" | 1345 | 3-4.5t |

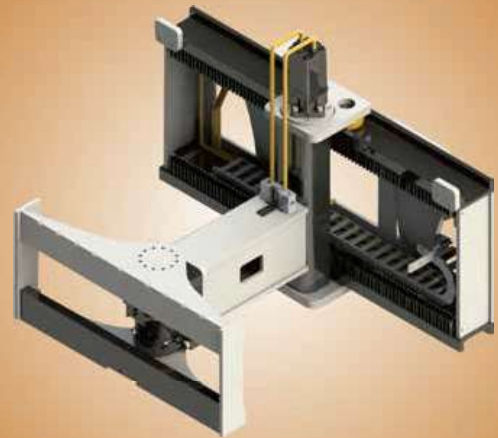
- Notes: 1. Please gain the actual overall carrying capacity of forklift trucks/attachments from the forklift truck manufacturers.
2. Forklift truck needs to add two groups of additional oil lines to match the attachments, and all the oil cylinders have self-locking functions.

| Model | Pressure Value Bar | | Flow Value L/min | |
|-------|-----------------------|------|---------------------|----------------|
| | Min. | Max. | Min. | Recommend Max. |
| FC**Q | 35 | 160 | 19 | 38 57 |

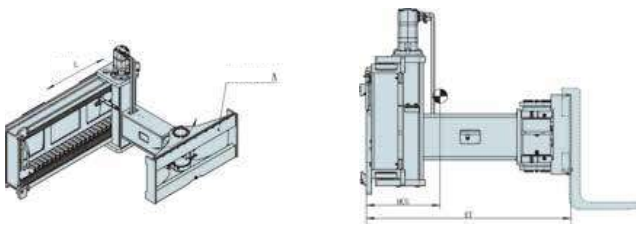
Configuration of Key Parts of Truck Attachments

- Hydraulic system: the oil cylinders adopt originally imported hydraulic control check valves; all the seals adopt imported products; and the high-pressure rubber hoses adopt cone sealed high-performance imported rubber hoses.
- Structural part: all the structural parts are welded by high-performance alloy steel plates.
- Mechanical performance: it can realize 45° forward tilting and 10° backward tilting; and it adds hydraulic control check valves for the oil cylinders to realize holding pressure for a long time, and further ensure the safety at work or rubber hoses burst.
- Applicable scope: it's applied to the transportation/tipping by clamping waste paper and other soft-material cargoes, which reduces the logistics costs and increases the production efficiency significantly.

HELI AST-Warehousing Equipments



AST-Warehousing Equipments is an unique attachment that can put the forks on either front, left or right side while loading. It is between the forks and fork carriage, swing 180° and side shifting via 2 units of hydraulic circuit. It can reach the goods from the side without turning around, realizing reload and stack goods in the narrow aisle.



| Capacity@ Load Center (Kg@mm) | Catalog Order No. | Mounting Class | Tire Size (mm) | Swing Angle (°) | Side Shift Range (mm) | Weight (kg) | Effective Thickness ET (mm) | Horizontal Center of Gravity HCG (mm) | Available Forklift (t) |
|----------------------------------|-------------------|----------------|----------------------------|-----------------|-----------------------|-------------|-----------------------------|---------------------------------------|------------------------|
| 800@500 | SX08G-A1 | III | 35X100X1070 45X125X1070 | ±90 | 0-920 | 470 | 1030 | 425 | 2.5t |

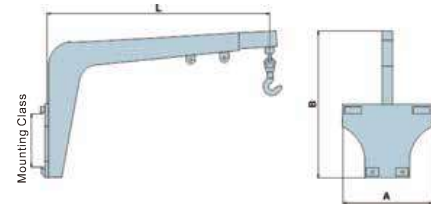
| Capacity@ Load Center (Kg@mm) | Catalog Order No. | Mounting Class | Tire Size (mm) | Swing Angle (°) | Side Shift Range (mm) | Weight (kg) | Effective Thickness ET (mm) | Horizontal Center of Gravity HCG (mm) | Available Forklift (t) |
|----------------------------------|-------------------|----------------|------------------------------------|-----------------|-----------------------|-------------|-----------------------------|---------------------------------------|------------------------|
| 1760@20" | SX08G-A1 | III | 1.4"×3.9"×42.1" 1.8"×4.9"×42.1" | ±90 | 0"-36.2" | 18.5" | 40.6" | 16.7" | 2.5t |

Notes: 1. Please gain the actual overall carrying capacity of forklift trucks/attachments from the forklift truck manufactures.
 2. Forklift truck needs to add two groups of additional oil lines so as to match the attachments.
 3. It is suggested to fit the standard fork and the non-standard length fork. Please contact the manufacturer for confirmation.

| Model | Pressure Value Bar | | Flow Value L/min | |
|-------|--------------------|------|------------------|----------------|
| | Min. | Max. | Min. | Recommand Max. |
| YW**G | 35 | 160 | 19 | 38 57 |

Configuration of Key Parts of Truck Attachments

1. Hydraulic system: The oil cylinder adopts imported original hydraulic control one-way valve. The high - pressure hose is a high - performance inlet hose sealed with a cone.
2. Structural part: All structural parts are made of high performance alloy steel welded together.
3. Mechanical performance: It can achieve 180° rotation and left and right lateral motion.
4. Applied range : Safe and efficient handling of goods, suitable for palletized storage of goods.



| Capacity@ Load Center Kg | Catalog Order No. | Truck Mounting Class | Crane Jib Type | Hook Number | Holding Position | Overall Width A (mm) | Overall Height B (mm) | Weight (kg) | Available Forklift (t) |
|-----------------------------|-------------------|----------------------|------------------|-------------|--------------------------------------|----------------------|-----------------------|-------------|------------------------|
| 1000 | QZ10G-X1 | Fork type | Single boom | 1 | 1800, 2000, 2200 2400, 2600, 2800 | 485 | 658 | 250 | 1-7t |
| 2500 | QZ25G-B2 | III | Single boom | 1 | 1300, 1600, 2000 2300, 2600 | 800 | 1335 | 300 | 3-4.5t |
| 1500 | QZ15G-B1 | III | Single boom | 1 | 1130 | 600 | 1800 | 250 | 3-4.5t |
| 3000 | QZ30G-B5 | III | Single boom | 1 | 1050, 1550 | 600 | 1478 | 365 | 3-4.5t |
| 2000 | QZ20G-B6 | III | Double boom boom | 4 | 400, 1400 | 1080 | 1475 | 365 | 3-4.5t |
| 4000 | QZ40G-C1 | IV | Single boom | 2 | 830, 1630 | 600 | 1480 | 375 | 5-7t |
| 3000 | QZ30G-C2 | IV | Double boom boom | 2 | 1030, 1880 | 1600 | 1300 | 880 | 5-7t |

