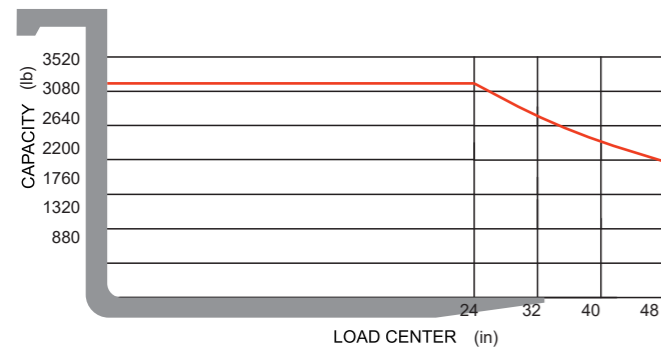


Reliable special designed instrument

The reliable special instrument gives a complete display of the vital information, like operation status, fault detection, etc. It ensures the operator predominate the vehicle status more intuitive and convenient.

① Information display	③ Performance selecting button (down)	① Fault indicator	⑧ Steering angle indicator	⑮ Enter
② Low voltage indicator	④ Performance selecting button (up)	② Brake indicator	⑨ Hour meter	⑯ Exit
③ Fault indicator	⑩ Value setting button (increase)	③ Seat switch indicator	⑩ Front and rear gears indicator	⑰ Battery level
④ Oil temperature indicator(spare use)	⑪ Enter	④ Date and time	⑪ Performance selecting button (down)	
⑤ Foot pedal safety switch indicator	⑫ Value setting button (decrease)	⑤ Working mode	⑫ Performance selecting button (up)	
⑥ Electronic Brake Indicator	⑬ Exit	⑥ Speed display	⑬ Value setting button (increase)	
⑦ Seat belt switch indicator (spare use)	⑭ Highly Recognized Functional Areas	⑦ Truck speed	⑭ Value setting button (decrease)	

LOAD CURVE



CQD15X2-GA2RHDLI
CQD15X2-GB2RHDLI

Note: The vertical axis stands for load capacity and the horizontal axis stands for load center which is calculated from the front surface of the forks to the gravity of the standard load. the standard load means a cubic with 48in edge length. When mast is tilted forward, using non-standard forks or loading large goods, the load capacity will be reduced. The load capacity of standard mast at different load center can be known from this load chart.

3200 lb G Series Reach Truck

- [Lithium Battery]
- [Double Reach]
- [Heavy Duty Type]



HELIAMERICAINC

Add / 4025 Welcome All Road, Suite 150 Atlanta, GA30349.
Mail / heli@heliforkliftamerica.com
Tel / 404-242-3288



LinkedIn



YouTube



Facebook

Comfortable

- Side battery extraction and battery rollers come standard making for easier battery replacement
- Integrated, Intelligent control handle is convenient and comfortable to use
- With proportional hydraulic control, working is more stable and more precise
- Electronic power steering offer easy, flexible, high efficient and quite operation
- Steering is centers itself automatically on startup for a safer operation

Efficiency

- Small turning radius makes steering flexible and easy
- Smaller load wheels easier to maneuver into the bottom of the shelf
- With optimal driving and lifting speeds, better working efficiency can be achieved
- With HELI's three speed modes, higher performance can be achieved
- Larger battery capacity for longer single shift time
- Bettering loading capacity and stability at higher lift heights

Energy saving

- With proportional controls, the truck is more energy efficient and has lower energy consumption
- All LED lights reduce lighting energy consumption by 80%
- Drive motor regenerative braking recycles more electric energy
- Electronic steering is more efficient saving energy

Maintainability

- Door, top cover and front all can be removed easily to allow great access to all chassis components for quick and easy maintenance
- With bolt type load wheel box installation, outrigger & load wheel maintenance are convenient and less costly

Safety



HELI's Intelligent control system automatic decelerates in sharp turns for safer operation



Parking brake is automatically applied on a slope or flat surface via a magnetic brake on the drive axle



Parking brake can also be activated by pressing button on the panel



Parking brake automatically activated when operator leave truck



Warning light and drive OPS system come standard to ensure complete truck safety



Regenerative braking provides extra power back to the electrical system releasing when the control handles is released



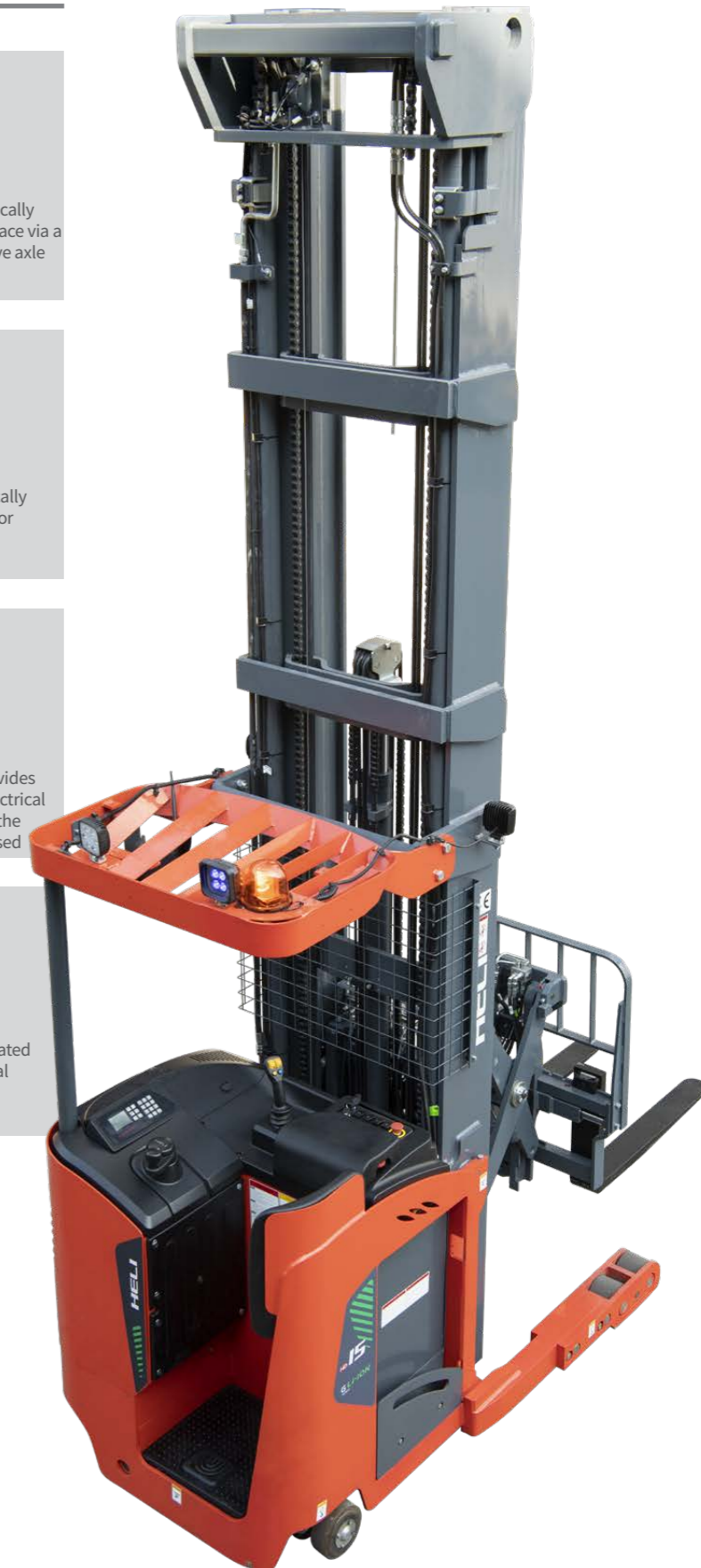
Emergency stop switch disengages power and applies brake automatically



Emergency brake is activated by releasing foot pedal



Five independent braking systems provide maximum, safe braking



CQD15X2-GA2RHDLI
CQD15X2-GB2RHDLI



Wide View Mast

- Comes standard with shift, tilt and reach functions
- Newly designed wide-view mast
- Pantograph maximize operator's view effectively when forks are retracted and extended
- Lift cylinder has end stroke cushions, while the controller provides in transit butters to ensure smooth lifting and lowering functions
- The controller also provides in transit and end stroke butters for smooth the fork retract function

Reliable OHG

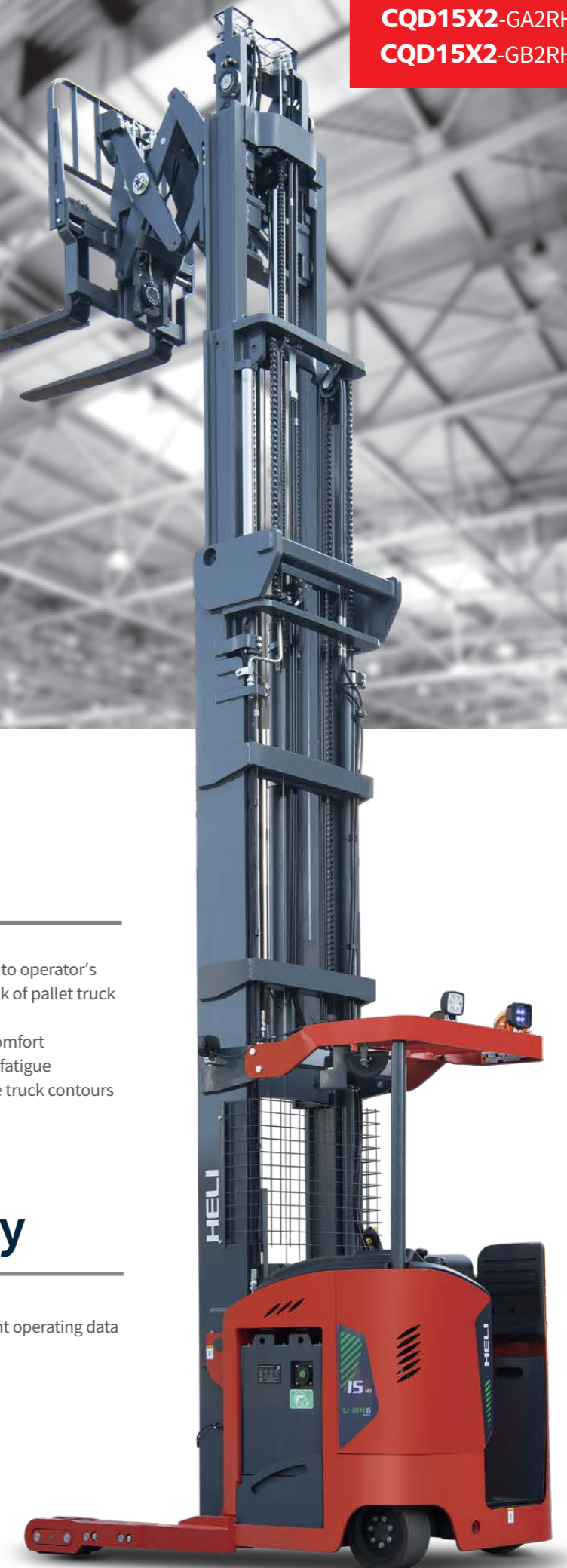
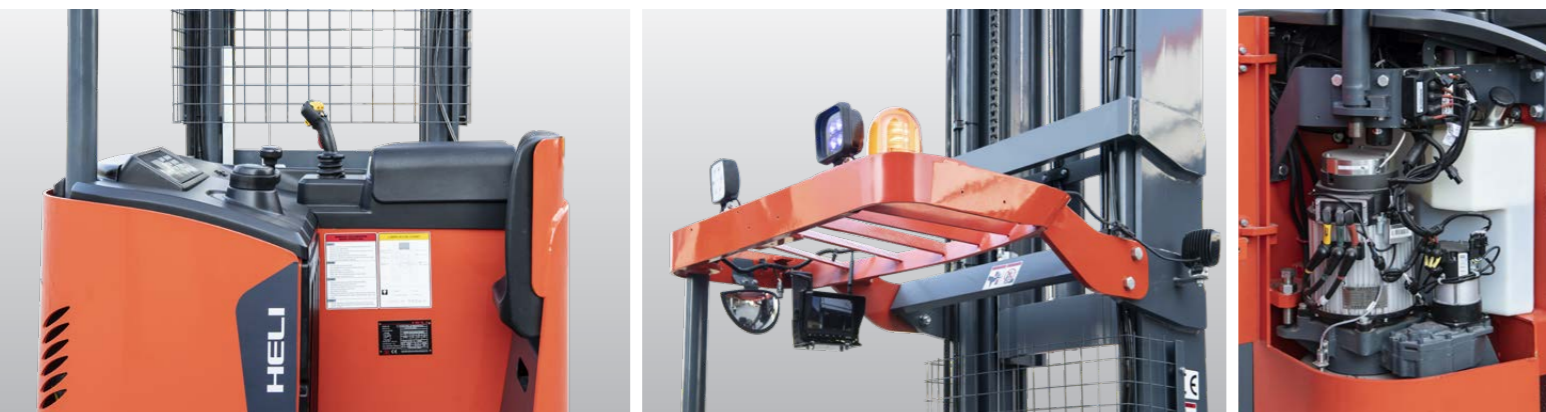
- The large arc shape of the overhead guard and properly angled grid slats greatly increase operator's upward view
- Rear leg connected to the chassis suspension, provide shock buffering from falling loads
- Without front legs, work view is improved

Comfortable Cab

- Comfortable step height provides ease of access to operator's compartment while providing safety from the risk of pallet truck forks tip intrusion
- Padded waist and arm supports for operator's comfort
- Cushioned floorboard helps reduce operator for fatigue
- The operator's body is fully protected within the truck contours

Intelligent Display

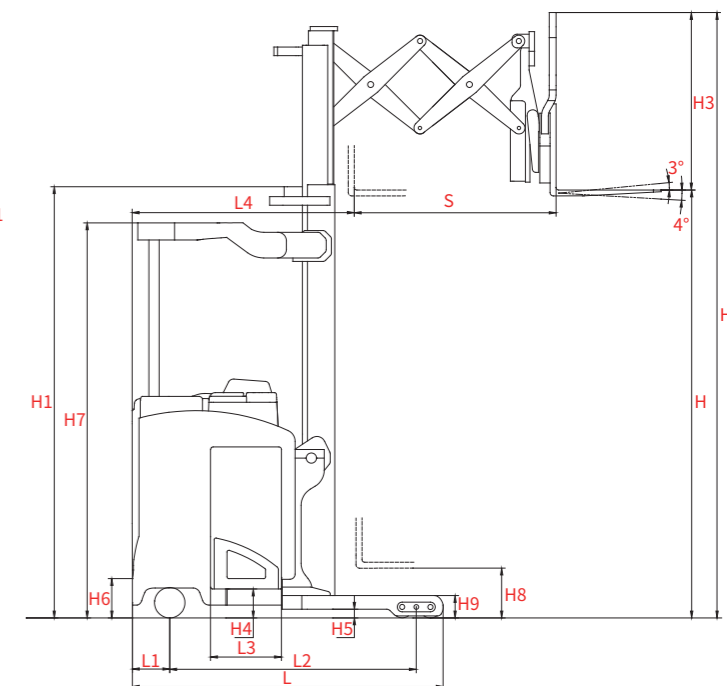
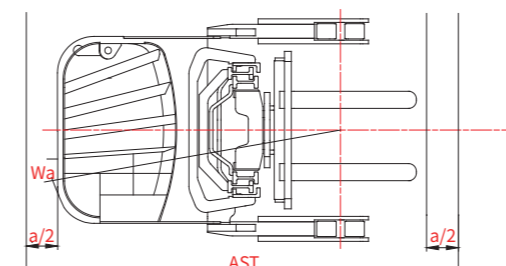
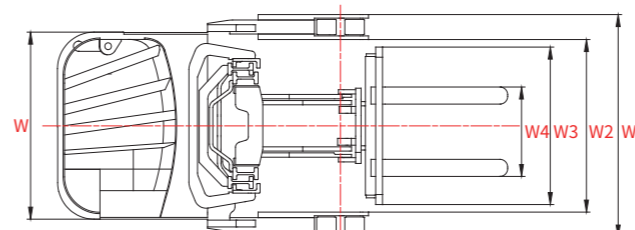
- High quality meter displaying clearly the important operating data
- 180° steering angle position display
- Display of battery power and fault code
- Working mode selection
- Hour meter
- Labor hour display



MANUFACTURER'S DATA AND DESIGN CHARACTERISTICS

Characteristics				
1.01	Manufacturer			HELI
1.02	Model		CQD15X2	CQD15X2
1.03	Configuration number		GA2RHDLI	GB2RHDLI
1.04	Load capacity	Q	lb	3200
1.05	Load center distance	C	in	24
1.06	Power model		Battery	Battery
1.07	Driving model		Stand-on	Stand-on
1.08	Wheel base	L2	in	64
1.09	Voltage		v	80
Tyre				
2.01	Tyre type			Polyurethane
2.02	Wheel number, drive/load/caster(X=drive wheel)			1×/4/2
2.03	Wheel size,load		in	φ6*4
2.04	Wheel size,drive		in	φ13*6
2.05	Wheel size,caster		in	φ7*3
Dimensions				
3.01	Lift height	H	in	270
3.02	Free lift	H1	in	75
3.03	Mast height,lowered	H8	in	120
3.04	Fork size,htickness/width/length	s/e/l	in	1*4*36
3.05	Fork adjusting width	W4	in	10~29
3.06	Tilt		deg	3°/4°
3.07	Fork sideshifting		in	±2
3.08	Truck body length(fork excluded)	L	in	80
3.09	Truck body width	W	in	43
3.10	Fork carriage width	W2	in	40
3.11	Reach distance	W1	in	51
3.12	Height of overhead guard	W3	in	33
3.13	Battery bottom clearance	S	in	43
3.14	Straddle clearance	H7	in	91
3.15	Straddle height	H4	in	7
3.16	Step height	H5	in	2
3.17	Minimum turning radius	H9	in	6
3.18	Drive wheel center to truck body rear distance	H6	in	10
3.19	Fork front to truck body rear distance	Wa	in	74
3.20	Aisle width with pallet 1200Lx1200w	L1	in	10
3.21	Aisle width with pallet 1000Lx1000w	L4	in	60
3.22	Straddle inside width (standard)	Ast	in	115
3.23	Straddle outside width (standard)	Ast	in	107
Performance				
4.01	Travelling speed,with/without load		mph	7.2/8.1
4.02	Lifting speed,with/without load		mph	6.8/6.8
4.03	Lowering speed,with/without load		fpm	65/102
4.04	Reach speed,with/without load		fpm	89/79
4.05	Maximum climb capability,with/without load			
Weight				
5.01	Total weight(without battery)		lb	7346
5.02	Axle loading, no load (fornt/rear)		lb	5666/3439
5.03	Axle loading, loaded (fornt/rear)		lb	5238/7068
Battery				
6.01	Battery voltage/capacity k5			
6.02	Minimum battery weight		lb	2205
6.03	Minimum battery weight		lb	1764
6.04	Battery department size		in	39*14*31
Motor and controller				
7.01	Driving motor power		hp	5
7.02	Lifting motor power		hp	13
7.03	Steering motor power		hp	0.4
7.04	Type of driving control			MOSFET/AC
7.05	Type of lifting control			MOSFET/AC
7.06	Type of steering control			MOSFET/AC
7.07	Transmission box			HELI special
7.08	Service brake			Electric
7.09	Parking Brake			Automatic
7.10	Hydraulic system working pressure		Mpa	21

AST:Right angle stacking aisle width
a:Clearance a=6in



WIDE VIEW FULL FREE 3-STAGE MAST

Mast model	Lifting height (in)	Free lifting height(in)	Mast overall height (in)	Load capacity(lb)		Service Weight,Unl(lb)	
	CQD15X2-GA2RHDLI CQD15X2-GB2RHDLI	CQD15X2-GA2RHDLI CQD15X2-GB2RHDLI	CQD15X2-GA2RHDLI CQD15X2-GB2RHDLI	CQD15X2-GA2RHDLI	CQD15X2-GB2RHDLI	CQD15X2-GA2RHDLI	CQD15X2-GB2RHDLI
ZSM685	270	75	120	3200	3200	9116	9667
ZSM762	300	87	131	2530	3200	9480	9590
ZSM815	321	96	140	2090	3200	9645	10207
ZSM866	341	105	149	1760	3200	9832	10384
ZSM930	366	116	160	/	2640	/	10571
ZSM1016	400	128	172	/	2050	/	10946
ZSM1070	421	134	178	/	1760	/	11067

Standard configuration

- AC travelling motor
- AC lifting motor
- AC steering motor
- ZAPI travelling motor controller
- ZAPI lifting motor controller
- ZAPI steering motor controller
- Electromagnetic brake
- DC/DC converter
- Low noise gear pupm
- Electromagnetic proportional valve
- Integral pantograph

Optional device

- Standard fork
- Overhead guard
- Load backrest
- Polyurethane tire
- LED combined display
- Front work light
- LED warning light
- Automatic steering slow down device
- Automatic Packing brake
- Operator's tool kit
- Three-stage full free lift mast(other lifting height)
- Fork extension
- Lifting height pre-selector
- Monitoring system
- Other battery
- Germany HOPPECKER battery
- Italy FAAM battery
- Battery charger
- Custom paint
- Operator protection guard
- Smart fleet management system