

HELI合力

G3 Series 6000lbs Piggyback Forklift

Contents

Part 1

Overview

Part 2

Characteristic

Part 3

Performance

G3 Series Piggyback Forklift Outline



G3 Series Piggyback Forklift Introduction



G3 series Piggyback forklift is a new forklift developed according to the market demands for truck forklifts abroad, mainly to solve the needs of logistics transport vehicles loading and unloading goods in the middle of the transportation process.

This model was developed based on studies done on foreign forklift trucks. We worked together on the design of static transmission forklift trucks for many years. This forklift truck adopts hydrostatic transmission technology, full wheel drive, and can be switched from high to low speed with one key.

The forklift can lift itself to its position to the rear of the truck. It is mainly used to accompany the logistics transport vehicles, but also like ordinary forklift, can be used on the dock, port, logistics transportation and other industries. The Piggyback forklift adapts to the loading and unloading of goods under the field uneven road conditions.

G3 Series Piggyback Forklift Classification

G3 series Piggyback classification				
Models	Tonnage	Mode of transmission	Adapted engine	Emission standards
CQCJ30-KUY3G3	6K	Hydrostatic drive	Kubota V2607	T4F

Contents

Part 1

Overview

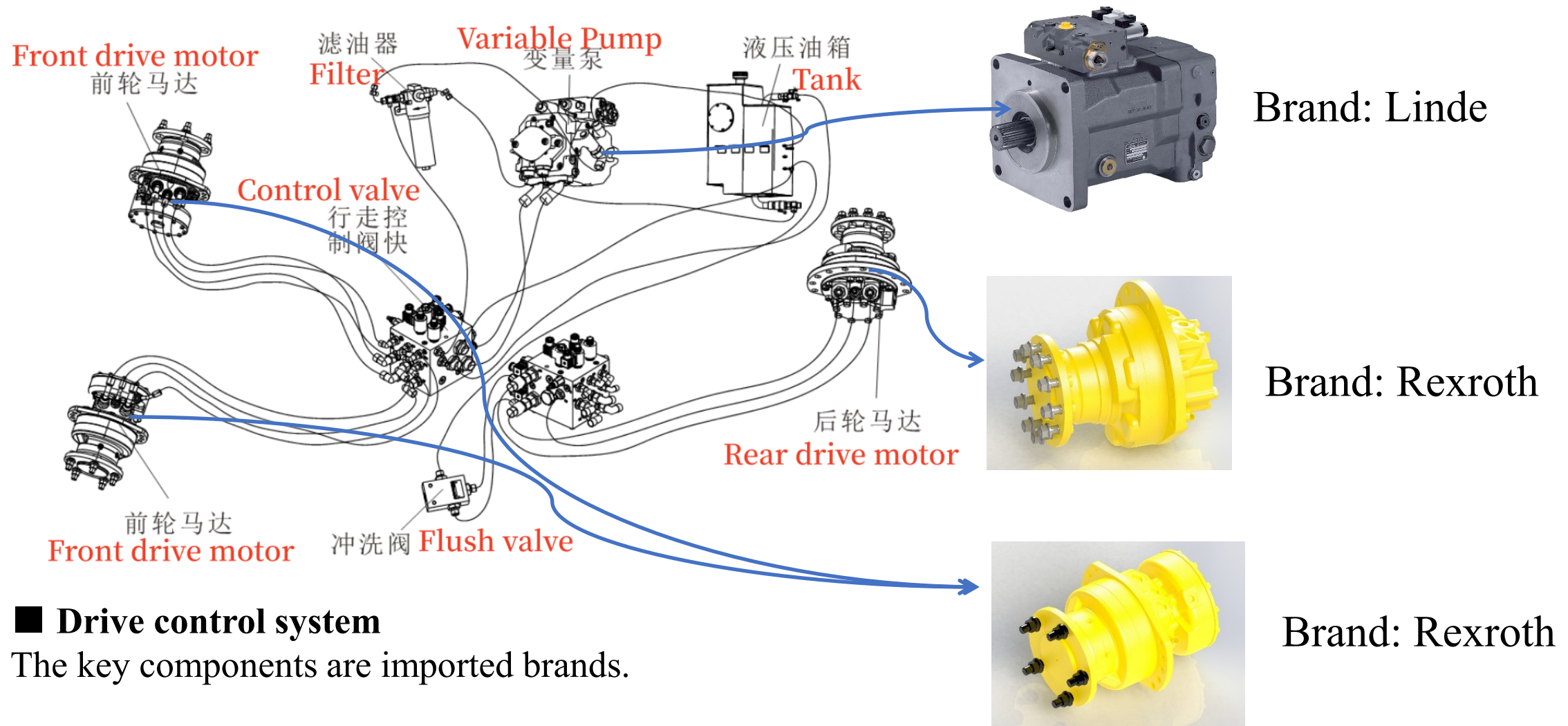
Part 2

Characteristic

Part 3

Performance

Part 2, Characteristic



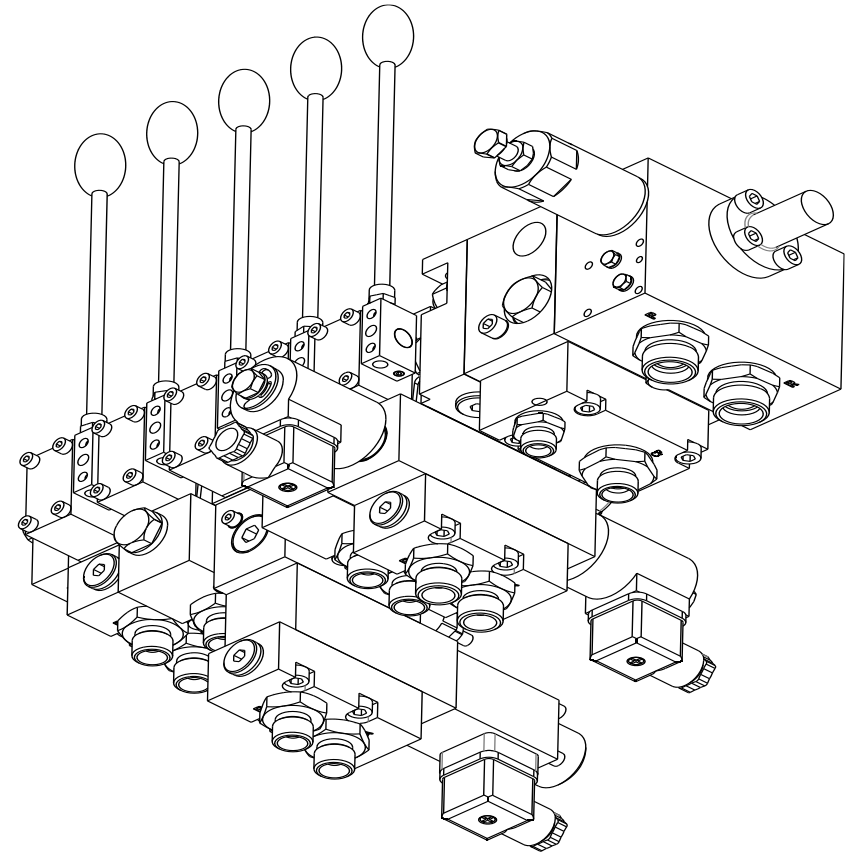
■ Drive control system

The key components are imported brands.

Part 2, Characteristic



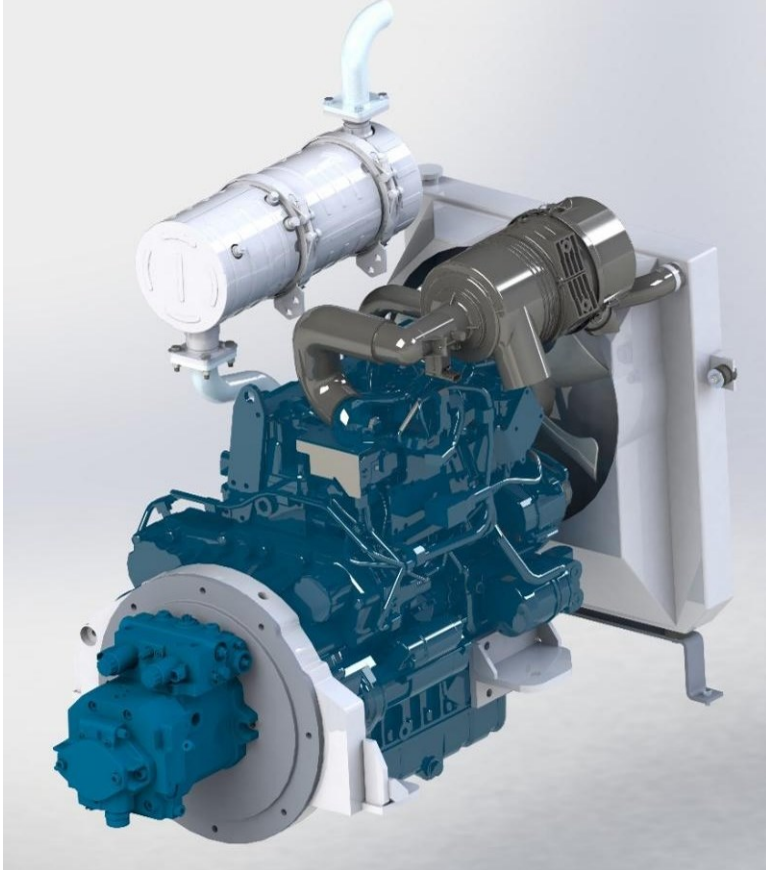
Brand: Cascade hydraulic forward moving fork, with a fork length of 53 "and a fully extended length of 93, and a fork extension of over 40". More convenient for stacking goods.



Brand: Harvey electro-hydraulic proportional multi way valve,

Part 2, Highlights

HELI合力



■ Kubota Engine.

This meets the emission standards of T4F.



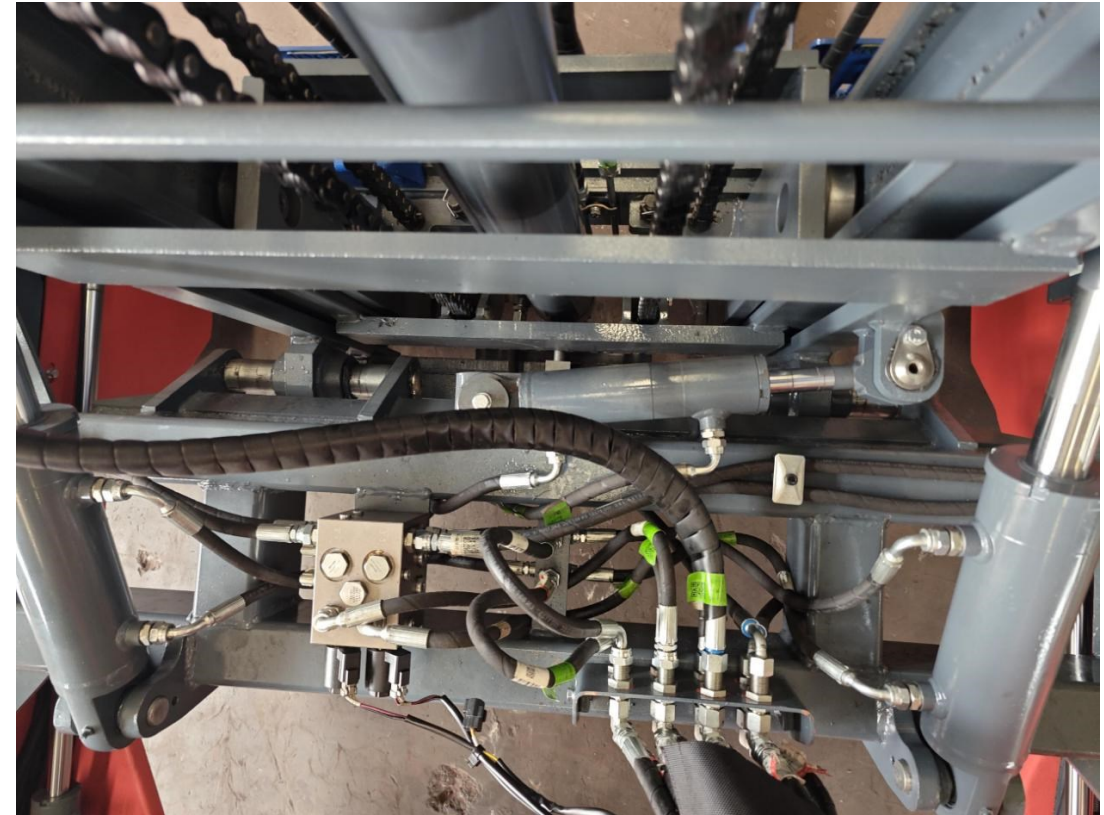
■ Hydrostatic Transmission

This gives it a strong climbing ability. The Piggyback can climb an incline up to 30%

Part 2, Highlights



■ High and low speed switch. Select high speed driving mode when using rear wheel drive. Select low speed driving mode when using full wheel drive. One key switch for high and low speed



■ The mast can be integrated at the side It is easy to align the tray and check the forklift.

Part 2, Highlights

HELI合力



■ Lifting system two-way load, can meet the needs of carrying their own weight when accompanying



■ The standard five-piece valve is equipped with compound, which can realize seven functions, such as lifting of the mast, extending and retracting of the mast, extending and retracting of the cargo fork, tilting, lateral movement of the mast, pressing and opening of the press plate, and extending and retracting of the leg

Part 2, Highlights

HELI合力



■ LED Lamps

These lamps offer high brightness, energy saving benefits and environmental protection



■ A set of random signal lights is added to the rear of the car, which is connected with the front car through a cable to avoid being rear-ended.

Part 2, Highlights

HELI合力



■ Digital liquid crystal display meter. This is a real-time accurate display of vehicle's working status



■ Telescopic forks are standard. This is to meet the accompanying function and to facilitate the placement and handling of goods

Contents

Part 1

Overview

Part 2

Highlights

Part 3

Performance

Part 3, Performance

Items	Units	Parameters
Model		CQCJ30-KUY3G3
Rated lifting weight	lb	6000
Load center distance	in	24
Lifting height	in	120
Mast tilt Angle (forward/back)	°	10/8
Overall dimensions (L x W x H)	in	118.3x92x100.4
Mast forward distance	in	38
Fork expansion stroke	in	39.4
Mast side shift distance (left shift/right shift)	in	2.6/2.6
Minimum ground clearance (at the mast)	in	7
Maximum speed (Loaded/Unloaded)	mph	7.5/8.1
Minimum turning radius	in	122
Service weight	lb	6820

HELI合力

Thanks!



A/中国合肥市经开区方兴大道668号
T/4001-600761/ 0551-63689000
P/230000
F/0551-63689666
E/@helichina.com

www.helichina.com